



Finance for  
**dynamic business**

Member of **PKF**

VIOHALCO SA.

μ μ  
6

26 2015

μ μ  
μ μ

772/9  
μ 3777/2009

VIOHALCO SA  
30 avenue Marnix  
1000 Brussels

2-4  
11527



VIOHALCO SA.

VIOHALCO SA.

VIOHALCO SA ( « Viohalco » )  
30  
2015 ( « Viohalco » ).

VIOHALCO SA ( « Viohalco » )  
2015 ( « Viohalco » ).

VIOHALCO SA.

VMB Bedrijfsrevisoren CVBA

Alain Bolssens

**μ**



**1**

**4**

**2**

**12**

**3**

**16**

**4**

**30**

**5**

**32**

**6**

**34**



1



## Περιγραφή της ανάθεσης

μ μ 772/9 μ μ 6 Viohalco μ 3777/2009, μ μ



## Έκθεση των Διοικητικών Συμβουλίων

μ μ 772/8  
,  
μ ,  
μ ,

μ . 5  
, μ  
μ ,  
μ .

μ 3777/2009,  
μ

μ μ  
μ μ  
,



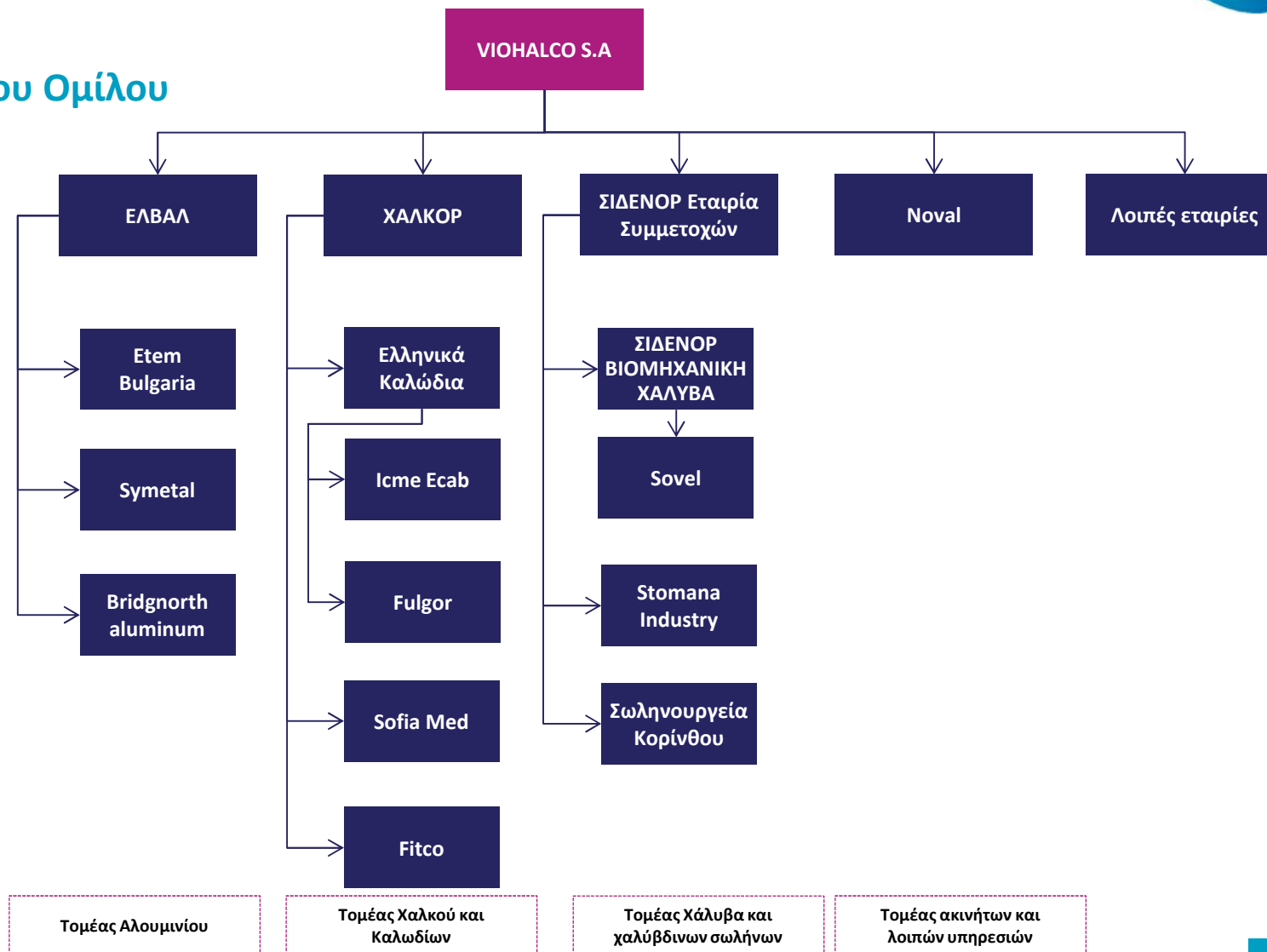








## Δομή του Ομίλου





## Αξία των περιουσιακών στοιχείων και υποχρεώσεων

μ μ 71 Viohalco μ μ μ μ 2190/1920, μ μ 31 μ 2014 :

μ	31-	-13	31-	-14	μ	31-	-13	31-	-14
	<b>176.354.414</b>		<b>177.397.984</b>			<b>182.300.927</b>		<b>180.666.507</b>	
& K	1.193.986		1.181.575			39.460.002		39.460.002	
E μ	9.427		7.908		μ	120.406.136		120.406.136	
μ	35.440		32.051		μ	46.354.156		46.354.156	
	28.238.903		27.850.810		/( μ )	-23.919.367		-25.553.787	
	143.651.857		145.243.932						
μ μ	3.224.801		3.081.708		μ μ	<b>2.355.322</b>		<b>2.306.797</b>	
					μ	2.316.335		2.245.585	
	<b>9.671.691</b>		<b>8.466.520</b>			38.987		61.212	
μ	3.844.579		3.634.557						
μ	4.575.748		4.412.555		μ	<b>1.369.857</b>		<b>2.891.202</b>	
μ μ μ	1.251.364		419.408		μ	1.368.990		2.890.336	
					μ μ	867		867	
	<b>186.026.106</b>		<b>185.864.506</b>			<b>186.026.106</b>		<b>185.864.506</b>	

μ μ 31 μ 2014, :

185.864.506

5.197.999

**180.666.507**







2

μ















3

μ

μ







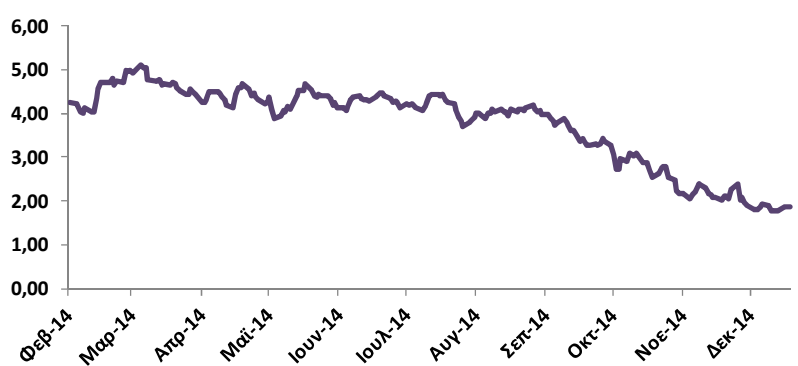
μ

( )



μ 2014 μ Viohalco, 31  
 , €1,78 26 μ Viohalco  
 , €4,48 3 μ 2014 μ  
 μ 6 μ  
 €2,02 €3,16 μ μ  
 μ €2,54. μ  
 μ Viohalco μ  
 μ €443.614.842 μ  
 €57.812.722. €693.971.733 μ

**Viohalco**



μ 31.12.2014: €1,86  
 μ : €1,78 26/12/2014  
 μ : €4,48 3/7/2014

μ μ μ  
 1 μ €2,02  
 3 μ €2,43  
 6 μ €3,16  
 μ : €2,02 - €3,16  
 μ : €2,54





μ μ μ

H Viohalco  
 ( ) μ DCF / μ μ  
 ( μ μ ) μ μ  
 μ μ /  
 μ μ .  
 μ μ μ μ μ  
 μ μ DCF (60%) μ μ  
 μ μ (40%) μ ,

Viohalco .

- **Viohalco** μ μ  
~~€61.809.740~~ **€1.065.781.204** μ μ  
 μ ~~€56.383.502.~~ μ μ  
 μ €3,92 €4,85 μ μ €4,35.
- **Viohalco** μ μ  
~~€157.850.528~~ **€214.932.248** μ μ  
~~€185.899.860.~~ μ μ  
 μ €1,64 €2,23 μ μ €1,93.

μ €

VIOHALCO					
μ					
1. DCF /	μ μ	60%	1.140.606.338	1.222.097.355	1.313.654.184
2. μ		40%	443.614.842	557.812.722	693.971.733
	μ μ	100%	<b>861.809.740</b>	<b>956.383.502</b>	<b>1.065.781.204</b>
μ					
1. DCF /	μ μ	60%	5,19	5,56	5,98
2. μ		40%	2,02	2,54	3,16
	μ μ	100%	<b>3,92</b>	<b>4,35</b>	<b>4,85</b>
μ					
1. DCF /	μ μ	60%	223.945.024	257.219.763	294.699.434
2. μ		40%	58.708.784	78.920.005	95.281.469
	μ μ	100%	<b>157.850.528</b>	<b>185.899.860</b>	<b>214.932.248</b>
μ					
1. DCF /	μ μ	60%	2,33	2,67	3,06
2. μ		40%	0,61	0,82	0,99
	μ μ	100%	<b>1,64</b>	<b>1,93</b>	<b>2,23</b>



4

μ





5

μ

μ



μ

μ

μ μ

μ μ μ μ



μ

Wemmel, 26 2015

---

VMB Bedrijfsrevisoren CVBA

Alain Bolssens



6

μ

μ



## 6.1. Όμιλος Viohalco : παρουσίαση άμεσων συμμετοχών

VIOHALCO	μ μμ		μ μμ		μ μμ		μ μμ
SOVEL	26,41%		99,99%		72,53%		100,00%
	68,39%	E TEM BG	100,00%	SO FIA MED	100,00%	STOMANA INDUSTRY	100,00%
	0,68%	BRIDGNORTH ALUMINIUM	75,00%	FITCO	100,00%	TEPRO STEEL EAD	100,00%
	67,89%		73,33%		29,56%	BOZETTI LTD	100,00%
	1,20%		50,00%	METAL AGENCIES LTD	35,00%	. . .	53,01%
	58,42%	STEELMET ROMANIA	60,00%	COPPERPROM LTD	40,00%	SIDEBALK STEEL DOO	100,00%
ALCOMET	98,72%	BLYTHE	100,00%	TECHOR SA	68,97%	JOSTDEX	99,89%
	97,48%	ATHENS ART CENTRE	100,00%	BELANTEL HOLDING LTD	100,00%		78,55%
NOVAL	100,00%	E TEM	100,00%		33,33%		
KIFISSOS MALL	54,43%	CCS	99,44%	STEELMET ROMANIA	40,00%		
TEPROMETAL	100,00%		100,00%	TEPRO METALL AG	27,01%		
SANITAS	82,14%	ALURAME SPA	70,00%		26,67%		
ANAMET	56,67%	AL - AMAR	90,00%	GENECOS	24,78%		
ANTIMET	93,82%	ALU BUILD SRL	100,00%		96,59%		
V IEM	99,90%	MOPPETS	100,00%	METAL GLOBE DOO	30,00%		
TECHOR	31,03%	GENECOS	38,43%	R&D	70,00%		
TEKA SYSTEMS	50,01%		26,67%	/	100,00%		
VITRUVIT	100,00%		35,22%		100,00%		
	50,00%		33,32%				
	100,00%	. . .	50,00%				
	99,95%		67,50%				
	11,84%	TEPRO METAL AG	46,46%				
	0,82%		50,00%				
	100,00%	METAL AGENCIES LTD	45,00%				
	0,29%	/	100,00%				
SYMMEP	100,00%		100,00%				
TEKA	20,00%						
CLUW	100,00%						
FLOKOS	83,78%						
	100,00%						



μ



## 6.1. Όμιλος Viohalco : παρουσίαση άμεσων συμμετοχών

	μ μμ		μ μμ	ALCOMET	μ μμ	SOVEL	μ μμ
	98,45%	FULGOR	100,00%		3,45%		0,64%
	90,00%	ICME ECAB	98,59%		0,01%		100,00%
	100,00%	LESCO O.O.D.	99,15%		3,89%		65,00%
	100,00%	LESCO ROMANIA	65,00%		4,19%		28,21%
	69,98%	DAILAIRE	100,00%		4,86%	BIODIESEL	25,00%
DOJLAN STEEL LLCOP	100,00%		99,15%	SOVEL	1,92%	/	100,00%
	61,00%		29,56%		0,94%		
SIDERAL SHPK	100,00%	METAL AGENCIES LTD	20,00%				
SIDEROM STEEL SLR	100,00%	COPPERPROM LTD	40,00%				
	6,53%	GENECOS	15,14%				
	33,35%	METAL GLOBE LTD	30,00%				
	50,00%						
	50,00%						
DOMOPLEX LTD	45,00%						
AWM SPA	34,00%						
/	100,00%						

	μ μμ	NOVAL	μ μμ
	0,82%	ALCOMET	0,64%
	0,99%		0,40%
	3,73%	SANTAS	17,86%
	1,93%		25,00%
	3,13%		100,00%

μ



## 6.2. ΕΛΒΑΛ: ιστορικά οικονομικά στοιχεία

μ	31/12/2012	31/12/2013	31/12/2014	μ	31/12/2012	31/12/2013	31/12/2014
	<b>475.699</b>	<b>485.922</b>	<b>498.578</b>		697.173	653.614	724.861
, μ	290.765	299.936	340.600		-666.873	-623.796	-687.707
( μ μ , )	181.325	183.052	154.930		<b>30.300</b>	<b>29.817</b>	<b>37.154</b>
μ	2.177	1.543	1.567	%	<b>4,3%</b>	<b>4,6%</b>	<b>5,1%</b>
μ	0	0	0				
μ μ	1.430	1.391	1.480		-4.768	-4.421	-6.741
					-10.552	-11.239	-14.198
	<b>281.364</b>	<b>282.092</b>	<b>356.226</b>	/( )	4.416	5.344	5.851
μ	158.039	167.823	189.690	μ	<b>19.396</b>	<b>19.501</b>	<b>22.065</b>
	113.642	97.409	160.546	%	<b>2,8%</b>	<b>3,0%</b>	<b>3,0%</b>
	1.547	580	3.213				
μ	8.136	16.280	2.777	μ			
				μ μ μ	-3.383	-5.255	-5.172
	<b>757.063</b>	<b>768.013</b>	<b>854.804</b>	μ μ μ	373	1.381	378
				/( μ ) μ	0	0	0
	<b>513.993</b>	<b>520.014</b>	<b>502.412</b>	%	<b>16.385</b>	<b>15.627</b>	<b>17.271</b>
					<b>2,4%</b>	<b>2,4%</b>	<b>2,4%</b>
μ μ μ	<b>51.374</b>	<b>61.100</b>	<b>63.765</b>				
μ μ μ	30.823	38.679	38.404	μ	-135	-11.371	181
μ μ μ	20.551	22.420	25.360	μ	<b>16.251</b>	<b>4.256</b>	<b>17.451</b>
μ μ μ μ	<b>191.696</b>	<b>186.899</b>	<b>288.627</b>				
μ μ μ	32.600	100.034	135.659				
μ μ μ	88.416	20.309	60.303				
μ μ μ	67.151	61.002	89.521				
μ μ μ	3.529	5.555	3.144				
	<b>757.063</b>	<b>768.013</b>	<b>854.804</b>				

μ



### 6.3. ΕΤΕΜ ΒG: ιστορικά οικονομικά στοιχεία

	31/12/2012	31/12/2013	31/12/2014		31/12/2012	31/12/2013	31/12/2014
μ	44.330	46.437	57.014		60.053	60.659	65.294
, μ μ μ	33.531	33.727	43.598		-54.181	-55.452	-60.915
( μμ , )	10.254	11.878	12.652		<b>5.872</b>	<b>5.207</b>	<b>4.378</b>
μ	545	832	764	%	<b>9,8%</b>	<b>8,6%</b>	<b>6,7%</b>
μ μ	0	0	0		-6.637	-5.139	-4.796
μ μ	0	0	0		-2.233	-2.463	-2.885
	<b>36.606</b>	<b>30.599</b>	<b>34.517</b>	/( )	604	614	1.071
μ μ	15.778	15.992	14.853	μ	<b>-2.394</b>	<b>-1.781</b>	<b>-2.231</b>
μ	19.653	13.563	19.022	%	<b>-4,0%</b>	<b>-2,9%</b>	<b>-3,4%</b>
	4	0	0		-1.687	-1.500	-1.506
μ μ	1.170	1.044	642	μ	0	0	0
	<b>80.936</b>	<b>77.037</b>	<b>91.530</b>	μ μ μ	0	0	0
	<b>28.712</b>	<b>25.777</b>	<b>21.974</b>	/( μ ) μ	<b>-4.080</b>	<b>-3.282</b>	<b>-3.736</b>
	<b>3.929</b>	<b>3.634</b>	<b>3.414</b>	%	<b>-6,8%</b>	<b>-5,4%</b>	<b>-5,7%</b>
μ μ μ	704	890	956		-61	-185	-67
μ μ μ	3.225	2.744	2.458	μ	<b>-4.142</b>	<b>-3.467</b>	<b>-3.803</b>
	<b>48.294</b>	<b>47.626</b>	<b>66.142</b>				
μ	0	0	2.720				
μ μ	29.106	30.944	29.455				
μ	19.063	16.491	33.839				
μ	125	191	129				
	<b>80.936</b>	<b>77.037</b>	<b>91.530</b>				

μ



## 6.4. SYMETAL: ιστορικά οικονομικά στοιχεία

μ	31/12/2012	31/12/2013	31/12/2014
	<b>55.186</b>	<b>52.429</b>	<b>52.449</b>
, μ μ μ	54.015	51.434	51.613
( μ μ , )	0	0	0
μ	1.150	972	822
μ μ	0	0	0
μ μ	21	24	14
	<b>70.053</b>	<b>74.332</b>	<b>83.812</b>
μ μ	33.899	33.610	39.713
μ	33.339	35.632	38.608
	88	53	215
μ μ	2.727	5.037	5.276
	<b>125.239</b>	<b>126.761</b>	<b>136.261</b>
	<b>74.828</b>	<b>78.732</b>	<b>82.670</b>
	<b>10.439</b>	<b>15.062</b>	<b>14.978</b>
μ μ μ	4.052	5.513	5.424
μ μ μ	6.387	9.549	9.553
	<b>39.971</b>	<b>32.968</b>	<b>38.613</b>
μ μ μ	14.071	18.084	16.370
μ μ μ	6.246	1.716	1.720
μ μ μ	18.427	10.451	19.017
μ μ μ	1.227	2.717	1.506
	<b>125.239</b>	<b>126.761</b>	<b>136.261</b>

μ	31/12/2012	31/12/2013	31/12/2014
	164.707	173.303	181.338
	-154.453	-160.724	-170.598
	<b>10.254</b>	<b>12.578</b>	<b>10.739</b>
%	<b>6,2%</b>	<b>7,3%</b>	<b>5,9%</b>
	-2.439	-2.604	-2.825
	-2.001	-2.328	-2.549
/( )	838	744	1.560
μ	<b>6.652</b>	<b>8.390</b>	<b>6.926</b>
%	<b>4,0%</b>	<b>4,8%</b>	<b>3,8%</b>
μ	-1.598	-1.393	-1.392
μ μ μ	0	0	0
/( μ ) μ	0	0	0
%	<b>5.055</b>	<b>6.997</b>	<b>5.534</b>
	<b>3,1%</b>	<b>4,0%</b>	<b>3,1%</b>
μ	-1.136	-3.375	-1.561
μ	<b>3.918</b>	<b>3.622</b>	<b>3.973</b>

μ



## 6.5. BRIDGNORTH: ιστορικά οικονομικά στοιχεία

μ	31/12/2012	31/12/2013	31/12/2014	μ	31/12/2012	31/12/2013	31/12/2014
	20.697	37.764	56.087		205.569	212.153	218.009
, μ μ μ	20.369	37.469	55.347		-185.967	-189.613	-193.609
( μ μ , )	0	0	0		<b>19.602</b>	<b>22.540</b>	<b>24.399</b>
μ	328	295	739	%	<b>9,5%</b>	<b>10,6%</b>	<b>11,2%</b>
μ	0	0	0		-4.877	-5.588	-4.651
μ μ	0	0	0		-2.769	-2.774	-3.119
	<b>89.933</b>	<b>72.706</b>	<b>90.439</b>		-273	-277	-235
μ μ	41.997	34.766	47.419	/( )	<b>11.682</b>	<b>13.901</b>	<b>16.394</b>
μ	28.229	27.974	32.151	μ	<b>5,7%</b>	<b>6,6%</b>	<b>7,5%</b>
μ μ	2.829	993	4.225		-247	-385	-769
μ	16.879	8.972	6.645	μ	0	0	0
	<b>110.630</b>	<b>110.470</b>	<b>146.526</b>	μ μ μ	0	0	0
	<b>79.653</b>	<b>86.080</b>	<b>107.137</b>	/( μ )	<b>11.435</b>	<b>13.515</b>	<b>15.626</b>
	<b>1.865</b>	<b>1.632</b>	<b>3.528</b>	μ	<b>5,6%</b>	<b>6,4%</b>	<b>7,2%</b>
μ μ μ	284	267	2.235		-1.337	-2.934	-3.607
μ μ μ	1.581	1.365	1.293	μ	<b>10.098</b>	<b>10.581</b>	<b>12.019</b>
	<b>29.112</b>	<b>22.757</b>	<b>35.861</b>				
μ μ μ	9.871	8.330	21.826				
μ μ	1.361	1.333	0				
μ	15.890	11.344	12.227				
μ	1.990	1.750	1.808				
	<b>110.630</b>	<b>110.470</b>	<b>146.526</b>				

μ



## 6.6. ΧΑΛΚΟΡ: ιστορικά οικονομικά στοιχεία

	31/12/2012	31/12/2013	31/12/2014		31/12/2012	31/12/2013	31/12/2014
μ	<b>251.607</b>	<b>276.106</b>	<b>321.298</b>		545.522	446.045	396.015
, μ μ μ	96.290	92.236	136.565		-527.270	-436.480	-377.116
( μ μ , )	150.138	179.165	179.668		<b>18.252</b>	<b>9.566</b>	<b>18.899</b>
μ	4.337	3.893	4.139	%	<b>3,3%</b>	<b>2,1%</b>	<b>4,8%</b>
μ	0	0	0				
μ μ	842	812	925		-5.638	-4.518	-4.834
					-9.606	-9.591	-8.645
	<b>142.690</b>	<b>123.763</b>	<b>119.655</b>	/( )	2.871	1.297	1.457
μ μ	56.896	54.244	58.758	μ	<b>5.879</b>	<b>-3.247</b>	<b>6.877</b>
μ	78.815	66.386	53.479	%	<b>1,1%</b>	<b>-0,7%</b>	<b>1,7%</b>
μ	1.054	80	592				
μ μ	5.925	3.053	6.827	μ	0	0	-10797,23
				μ μ μ	-16.231	-17.138	-17.568
	<b>394.297</b>	<b>399.868</b>	<b>440.953</b>	μ μ μ	217	75	98
				/( μ ) μ	0	0	0
	<b>123.157</b>	<b>94.769</b>	<b>119.666</b>	%	<b>-10.134</b>	<b>-20.309</b>	<b>-21.390</b>
					<b>-1,9%</b>	<b>-4,6%</b>	<b>-5,4%</b>
	<b>11.010</b>	<b>18.514</b>	<b>27.684</b>				
μ μ μ	7.357	15.378	24.365	μ	-890	-8.178	5.278
μ μ μ	3.653	3.136	3.319	μ	<b>-11.024</b>	<b>-28.487</b>	<b>-16.112</b>
	<b>260.131</b>	<b>286.585</b>	<b>293.603</b>				
μ μ μ	91.889	178.929	179.239				
μ μ μ	136.895	76.091	81.573				
μ μ μ	29.592	30.774	31.975				
μ μ μ	1.755	791	816				
	<b>394.297</b>	<b>399.868</b>	<b>440.953</b>				

μ



## 6.7. SOFIA MED: ιστορικά οικονομικά στοιχεία

μ	31/12/2012	31/12/2013	31/12/2014	μ	31/12/2012	31/12/2013	31/12/2014
	<b>100.844</b>	<b>99.910</b>	<b>145.632</b>		341.276	346.842	320.268
, μ μ μ	93.968	93.120	142.605		-334.988	-347.885	-318.373
( μ μ , )	0	0	0		<b>6.287</b>	<b>-1.044</b>	<b>1.895</b>
μ μ μ	811	717	1.371	%	<b>1,8%</b>	<b>-0,3%</b>	<b>0,6%</b>
μ μ μ	6.065	6.074	1.656				
μ μ μ	0	0	0		-1.764	-1.380	-1.926
					-2.797	-3.058	-2.751
	<b>81.363</b>	<b>84.168</b>	<b>71.332</b>	/( )	-200	-238	-124
μ μ	57.043	43.017	50.878	μ	<b>1.526</b>	<b>-5.720</b>	<b>-2.907</b>
μ μ	23.394	16.152	15.502	%	<b>0,4%</b>	<b>-1,6%</b>	<b>-0,9%</b>
	458	258	544				
μ μ	468	24.740	4.407	μ			
				μ μ μ	-7.158	-6.985	-8.145
	<b>182.207</b>	<b>184.078</b>	<b>216.964</b>	μ μ μ	0	0	0
				/( μ ) μ	0	0	0
	<b>36.843</b>	<b>53.853</b>	<b>87.728</b>	%	<b>-5.631</b>	<b>-12.706</b>	<b>-11.052</b>
					<b>-1,7%</b>	<b>-3,7%</b>	<b>-3,5%</b>
	<b>186</b>	<b>199</b>	<b>180</b>	μ	566	-20	516
μ μ μ	0	0	0				
μ μ μ	186	199	180	μ	<b>-5.066</b>	<b>-12.726</b>	<b>-10.536</b>
	<b>145.179</b>	<b>130.026</b>	<b>129.057</b>	μ			
	5.000	98.482	89.868				
	93.853	716	9.117				
μ μ μ	46.141	30.469	29.793				
μ μ μ	184	359	278				
	<b>182.207</b>	<b>184.078</b>	<b>216.964</b>				

μ



## 6.8. FITCO: ιστορικά οικονομικά στοιχεία

μ	31/12/2012	31/12/2013	31/12/2014	μ	31/12/2012	31/12/2013	31/12/2014
	18.421	17.473	28.684		53.427	50.647	59.410
, μ μ μ	18.271	17.339	26.873		-52.727	-50.178	-58.692
( μ μ , )	0	0	1.680		<b>701</b>	<b>468</b>	<b>718</b>
μ	105	93	91	%	<b>1,3%</b>	<b>0,9%</b>	<b>1,2%</b>
μ	0	0	0				
μ μ	45	40	40		-664	-639	-637
					-735	-775	-800
	<b>21.804</b>	<b>24.857</b>	<b>25.166</b>	/( )	203	-345	-1.442
μ μ	13.348	16.111	15.964	μ	<b>-496</b>	<b>-1.290</b>	<b>-2.161</b>
μ	6.730	7.578	8.466	%	<b>-0,9%</b>	<b>-2,5%</b>	<b>-3,6%</b>
μ	12	65	171				
μ μ	1.715	1.103	565	μ			
				μ μ μ	-1.156	-1.109	-1.166
	<b>40.225</b>	<b>42.330</b>	<b>53.851</b>	/( μ ) μ μ	0	0	0
				μ	0	0	0
	<b>18.149</b>	<b>15.742</b>	<b>21.748</b>	%	<b>-1.652</b>	<b>-2.399</b>	<b>-3.327</b>
					<b>-3,1%</b>	<b>-4,7%</b>	<b>-5,6%</b>
	<b>3.439</b>	<b>3.608</b>	<b>6.340</b>				
μ μ μ	2.484	2.596	5.308	μ	323	-84	419
μ μ μ	955	1.012	1.031	μ	<b>-1.328</b>	<b>-2.483</b>	<b>-2.908</b>
	<b>18.637</b>	<b>22.980</b>	<b>25.763</b>				
μ μ μ	1.212	13.322	12.940				
μ μ μ	15.099	3.313	4.291				
μ μ μ	2.114	6.280	8.408				
μ μ μ	212	65	124				
	<b>40.225</b>	<b>42.330</b>	<b>53.851</b>				



μ



## 6.9. ΕΛΛΗΝΙΚΑ ΚΑΛΩΔΙΑ: ιστορικά οικονομικά στοιχεία

	31/12/2012	31/12/2013	31/12/2014		31/12/2012	31/12/2013	31/12/2014
μ	<b>124.338</b>	<b>121.874</b>	<b>141.628</b>	μ	363.522	259.172	248.809
, μ μ μ	70.810	60.419	75.228		-356.098	-258.162	-247.245
( μμ , )	50.271	55.599	59.291		<b>7.424</b>	<b>1.010</b>	<b>1.565</b>
μ	2.302	4.965	5.964 %		<b>2,0%</b>	<b>0,4%</b>	<b>0,6%</b>
μ	0	0	0				
μ μ	955	891	1.146		-3.574	-3.596	-3.360
					-4.401	-4.379	-2.526
	<b>133.130</b>	<b>142.796</b>	<b>133.165</b>	/ ( )	601	1.980	-6.409
μ μ	45.396	32.512	41.643	μ	<b>50</b>	<b>-4.985</b>	<b>-10.730</b>
μ	72.687	96.626	88.234 %		<b>0,0%</b>	<b>-1,9%</b>	<b>-4,3%</b>
μ μ	248	274	0				
μ μ	14.799	13.384	3.289	μ			
	<b>257.468</b>	<b>264.670</b>	<b>274.793</b>	μ μ μ	-9.154	-7.467	-9.674
				μ μ μ	217	75	12.724
	<b>87.477</b>	<b>77.177</b>	<b>86.837</b>	/ ( μ ) μ	0	0	0
				%	<b>-8.887</b>	<b>-12.376</b>	<b>-7.680</b>
	<b>6.913</b>	<b>6.916</b>	<b>9.400</b>		<b>-2,4%</b>	<b>-4,8%</b>	<b>-3,1%</b>
μ μ μ	1.812	142	2.578	μ	1.970	1.725	2.706
μ μ μ	5.101	6.774	6.822	μ	<b>-6.917</b>	<b>-10.651</b>	<b>-4.974</b>
	<b>163.078</b>	<b>180.577</b>	<b>178.556</b>				
μ μ μ	30.693	77.449	76.510				
μ μ μ	71.094	33.176	49.976				
μ μ μ	61.272	69.858	51.172				
μ μ μ	19	94	898				
	<b>257.468</b>	<b>264.670</b>	<b>274.793</b>				

μ



## 6.10. FULGOR: ιστορικά οικονομικά στοιχεία

	31/12/2012	31/12/2013	31/12/2014		31/12/2012	31/12/2013	31/12/2014
μ	60.838	105.716	120.451		146.914	117.850	111.056
, μ μ μ	60.300	105.162	118.306		-146.999	-118.375	-112.667
( μ μ , )	0	0	332		-85	-525	-1.611
μ	337	354	1.347	%	-0,1%	-0,4%	-1,5%
μ	0	0	0				
μ μ	201	201	465				
	21.712	38.247	51.907		-910	-832	-1.485
μ	15.209	21.402	30.587	/( )	-1.602	-1.387	-2.985
μ	5.084	14.050	20.415	μ	373	-263	-5.977
μ	36	70	350	%	-2.224	-3.006	-12.058
μ μ	1.383	2.725	556	%	-1,5%	-2,6%	-10,9%
	82.550	143.963	172.358				
	18.076	14.260	6.790	μ	-3.213	-4.009	-6.152
	4.542	17.381	21.675	μ μ μ	0	0	0
μ μ μ	3.507	6.006	958	/( μ ) μ	0	0	0
μ μ μ	1.035	11.375	20.717	%	-5.437	-7.015	-18.210
	59.932	112.322	143.893	%	-3,7%	-6,0%	-16,4%
μ	28.753	36.448	36.656	μ	452	-2.408	5.459
μ μ	582	12.657	30.696	μ	-4.985	-9.423	-12.752
μ μ	30.571	63.217	76.541				
μ	26	0	0				
	82.550	143.963	172.358				

μ



## 6.11. ΙΣΜΕ: ιστορικά οικονομικά στοιχεία

	31/12/2012	31/12/2013	31/12/2014		31/12/2012	31/12/2013	31/12/2014
μ	55.186	19.289	47.270		164.707	106.471	117.548
, μ μ μ	54.015	18.881	46.988		-154.453	-103.079	-114.370
( μμ , )	0	0	0		<b>10.254</b>	<b>3.392</b>	<b>3.178</b>
μ	1.150	245	238	%	<b>6,2%</b>	<b>3,2%</b>	<b>2,7%</b>
μ μ	0	136	0		-2.439	-2.005	-2.009
μ μ	21	28	44		-2.001	-1.559	-1.620
	<b>70.053</b>	<b>66.354</b>	<b>45.495</b>	/( )	838	591	552
μ μ	33.899	23.596	26.126	μ	<b>6.652</b>	<b>418</b>	<b>102</b>
μ	33.339	41.386	18.592	%	<b>4,0%</b>	<b>0,4%</b>	<b>0,1%</b>
μ μ	88	30	0		-1.598	-1.170	-2.000
μ μ	2.727	1.342	777	μ μ μ	0	0	0
	<b>125.239</b>	<b>85.643</b>	<b>92.765</b>	/( μ ) μ	0	0	0
	<b>74.828</b>	<b>37.124</b>	<b>42.851</b>	%	<b>5.055</b>	<b>-751</b>	<b>-1.897</b>
	<b>10.439</b>	<b>0</b>	<b>4.057</b>		<b>3,1%</b>	<b>-0,7%</b>	<b>-1,6%</b>
μ μ μ	4.052	0	3.793	μ	-1.136	-90	-61
μ μ μ	6.387	0	264	μ	<b>3.918</b>	<b>-841</b>	<b>-1.958</b>
	<b>39.971</b>	<b>48.519</b>	<b>45.858</b>				
μ μ μ	14.071	0	0				
μ μ μ	6.246	37.166	28.117				
μ μ μ	18.427	11.353	17.699				
μ μ μ	1.227	1	42				
	<b>125.239</b>	<b>85.643</b>	<b>92.766</b>				

μ



## 6.12. ΣΙΔΕΝΟΡ ΒΙΟΜΗΧΑΝΙΚΗ ΧΑΛΥΒΑ – SOVEL: ιστορικά οικονομικά στοιχεία

μ	31/12/2012	31/12/2013	31/12/2014	μ	31/12/2012	31/12/2013	31/12/2014
	<b>505.218</b>	<b>488.870</b>	<b>485.821</b>		480.477	382.180	353.534
, μ μ μ	312.791	292.995	290.263		-489.034	-383.798	-344.945
( μ μ )	184.651	188.219	187.661		<b>-8.557</b>	<b>-1.618</b>	<b>8.589</b>
μ μ	1.562	1.586	1.964	%	<b>-1,8%</b>	<b>-0,4%</b>	<b>2,4%</b>
μ μ	0	0	0				
μ μ	6.214	6.070	5.934		-8.647	-6.528	-5.704
	<b>257.101</b>	<b>208.583</b>	<b>240.933</b>		-13.939	-11.408	-11.548
μ μ	116.155	88.199	93.780	/ ( )	-2.401	-1.378	-1.711
μ μ	134.032	113.265	139.665	μ	<b>-33.544</b>	<b>-20.931</b>	<b>-10.374</b>
	0	0	0	%	<b>-7,0%</b>	<b>-5,5%</b>	<b>-2,9%</b>
μ μ	6.914	7.118	7.488	μ			
	<b>762.319</b>	<b>697.453</b>	<b>726.754</b>	μ μ μ	-21.492	-21.641	-21.472
	<b>289.600</b>	<b>239.458</b>	<b>204.521</b>	μ μ μ	0	0	0
	<b>46.040</b>	<b>46.090</b>	<b>57.310</b>	/ ( μ ) μ	-538	283	392
μ μ μ	29.598	36.904	37.173	%	<b>-55.574</b>	<b>-42.289</b>	<b>-31.454</b>
μ μ μ	16.443	9.186	20.136		<b>-11,6%</b>	<b>-11,1%</b>	<b>-8,9%</b>
	<b>426.679</b>	<b>411.904</b>	<b>464.924</b>	μ	618	-7.379	-495
μ μ μ	68.327	249.304	248.897	μ	<b>-54.956</b>	<b>-49.667</b>	<b>-31.949</b>
μ μ μ	274.956	86.123	105.612				
μ μ μ	80.323	76.477	110.238				
μ μ μ	3.074	0	178				
	<b>762.319</b>	<b>697.453</b>	<b>726.754</b>				

μ



### 6.13. SOVEL: ιστορικά οικονομικά στοιχεία

μ	31/12/2012	31/12/2013	31/12/2014
	<b>207.560</b>	<b>196.473</b>	<b>198.041</b>
, μ μ μ	193.063	182.456	184.977
( μ μ , )	12.802	12.302	11.353
μ	0	0	0
μ	0	0	0
μ μ	1.695	1.715	1.711
	<b>87.104</b>	<b>84.712</b>	<b>90.914</b>
μ μ	68.172	52.538	59.055
μ	18.601	31.817	31.716
μ	0	0	0
μ μ	331	357	143
	<b>294.665</b>	<b>281.185</b>	<b>288.955</b>
	<b>131.697</b>	<b>104.389</b>	<b>91.475</b>
	<b>25.720</b>	<b>29.343</b>	<b>36.349</b>
μ μ μ	17.447	22.198	22.480
μ μ μ	8.273	7.144	13.870
	<b>137.248</b>	<b>147.453</b>	<b>161.130</b>
μ μ μ	11.500	71.199	70.778
μ μ μ	83.586	28.405	33.159
μ μ μ	42.161	47.849	57.194
μ μ μ	0	0	0
	<b>294.665</b>	<b>281.185</b>	<b>288.955</b>

μ	31/12/2012	31/12/2013	31/12/2014
	480.477	257.583	242.118
	-489.034	-248.895	-224.461
	<b>-8.557</b>	<b>8.688</b>	<b>17.657</b>
%	<b>-1,8%</b>	<b>3,4%</b>	<b>7,3%</b>
	-8.647	-21.682	-20.571
	-13.939	-2.930	-2.730
/( )	-2.401	-844	-337
μ	<b>-33.544</b>	<b>-16.769</b>	<b>-5.981</b>
%	<b>-7,0%</b>	<b>-6,5%</b>	<b>-2,5%</b>
μ		0	0
μ μ μ	-21.492	-5.674	-6.558
μ μ μ	0	14	247
/( μ ) μ μ	-538	-500	-4
	<b>-55.574</b>	<b>-22.928</b>	<b>-12.296</b>
%	<b>-11,6%</b>	<b>-8,9%</b>	<b>-5,1%</b>
μ	618	-4.654	-369
μ	<b>-54.956</b>	<b>-27.583</b>	<b>-12.665</b>

μ



## 6.14. STOMANA: ιστορικά οικονομικά στοιχεία

μ	31/12/2012	31/12/2013	31/12/2014
	<b>201.891</b>	<b>198.153</b>	<b>196.556</b>
, μ μ μ	199.135	195.387	193.797
( μμ , )	2.743	2.743	2.743
μ	12	23	16
μ	0	0	0
μ μ	0	0	0
	<b>137.391</b>	<b>122.912</b>	<b>138.328</b>
μ μ	94.957	81.505	82.163
μ	39.326	38.287	51.019
μ	0	0	0
μ μ	3.108	3.119	5.146
	<b>339.281</b>	<b>321.065</b>	<b>334.884</b>
	<b>128.830</b>	<b>111.697</b>	<b>99.035</b>
	<b>9.674</b>	<b>8.620</b>	<b>7.264</b>
μ μ μ	7.995	7.005	5.786
μ μ μ	1.679	1.615	1.478
	<b>200.778</b>	<b>200.747</b>	<b>228.585</b>
μ μ μ	72.986	54.586	44.520
μ μ μ	89.542	107.950	123.270
μ μ μ	38.187	38.144	60.672
μ μ μ	62	66	124
	<b>339.281</b>	<b>321.065</b>	<b>334.884</b>

μ	31/12/2012	31/12/2013	31/12/2014
	370.583	283.196	330.869
	-352.487	-267.611	-305.890
	<b>18.096</b>	<b>15.585</b>	<b>24.979</b>
%	<b>4,9%</b>	<b>5,5%</b>	<b>7,5%</b>
	-23.100	-19.224	-23.515
	-4.725	-3.803	-3.694
/( )	-2.274	-1.201	-1.648
%	<b>-3,2%</b>	<b>-3,1%</b>	<b>-1,2%</b>
μ	-10.901	-9.485	-10.068
μ μ μ	0	0	0
/( μ ) μ	0	0	0
%	<b>-22.905</b>	<b>-18.128</b>	<b>-13.947</b>
	<b>-6,2%</b>	<b>-6,4%</b>	<b>-4,2%</b>
μ	1.895	991	1.225
μ	<b>-21.010</b>	<b>-17.138</b>	<b>-12.722</b>

μ



## 6.15. ΣΩΛΗΝΟΥΡΓΕΙΑ ΚΟΡΙΝΘΟΥ: ιστορικά οικονομικά στοιχεία

μ	31/12/2012	31/12/2013	31/12/2014	μ	31/12/2012	31/12/2013	31/12/2014
	<b>127.896</b>	<b>140.362</b>	<b>172.641</b>		234.666	165.365	188.190
, μ μ μ	103.774	116.143	155.058		-190.530	-142.978	-168.980
( μ μ , )	18.779	19.059	12.772		<b>44.136</b>	<b>22.386</b>	<b>19.211</b>
μ	0	0	0	%	<b>18,8%</b>	<b>13,5%</b>	<b>10,2%</b>
μ μ	73	186	11		-24.980	-16.838	-20.517
μ μ	5.269	4.975	4.800		-7.236	-7.690	-7.473
	<b>130.656</b>	<b>150.837</b>	<b>189.736</b>	/( )	-2.289	-2.966	4.753
μ μ	47.443	50.402	83.726	μ	<b>9.632</b>	<b>-5.107</b>	<b>-4.026</b>
μ	55.565	59.352	96.281	%	<b>4,1%</b>	<b>-3,1%</b>	<b>-2,1%</b>
μ	142	14	154				
μ μ	27.506	41.070	9.575	μ			
	<b>258.552</b>	<b>291.199</b>	<b>362.376</b>	μ μ μ	-3.139	-3.080	-3.019
				μ μ μ	0	0	0
	<b>164.728</b>	<b>156.301</b>	<b>139.818</b>	/( μ ) μ	5.310	4.767	2.137
				%	<b>11.802</b>	<b>-3.420</b>	<b>-4.909</b>
	<b>13.756</b>	<b>16.142</b>	<b>14.467</b>		<b>5,0%</b>	<b>-2,1%</b>	<b>-2,6%</b>
μ μ μ	11.701	14.327	13.094	μ	-2.128	-2.718	-647
μ μ μ	2.055	1.815	1.373	μ	<b>9.675</b>	<b>-6.138</b>	<b>-5.556</b>
	<b>80.067</b>	<b>118.757</b>	<b>208.091</b>				
μ	12.000	52.549	76.797				
μ μ	37.911	21.047	40.500				
μ μ μ	27.492	45.071	83.956				
μ μ	2.664	90	6.839				
	<b>258.552</b>	<b>291.199</b>	<b>362.376</b>				